



COMUNE DI RAGUSA  
COMPLETAMENTO RESTAURO  
PALAZZO EX CANCELLERIA

CUP: F27H15001790002

Progettista e Direttore dei lavori  
arch. Chiara Tumino

Collaboratore specializzato  
ing. Angelo Ventura

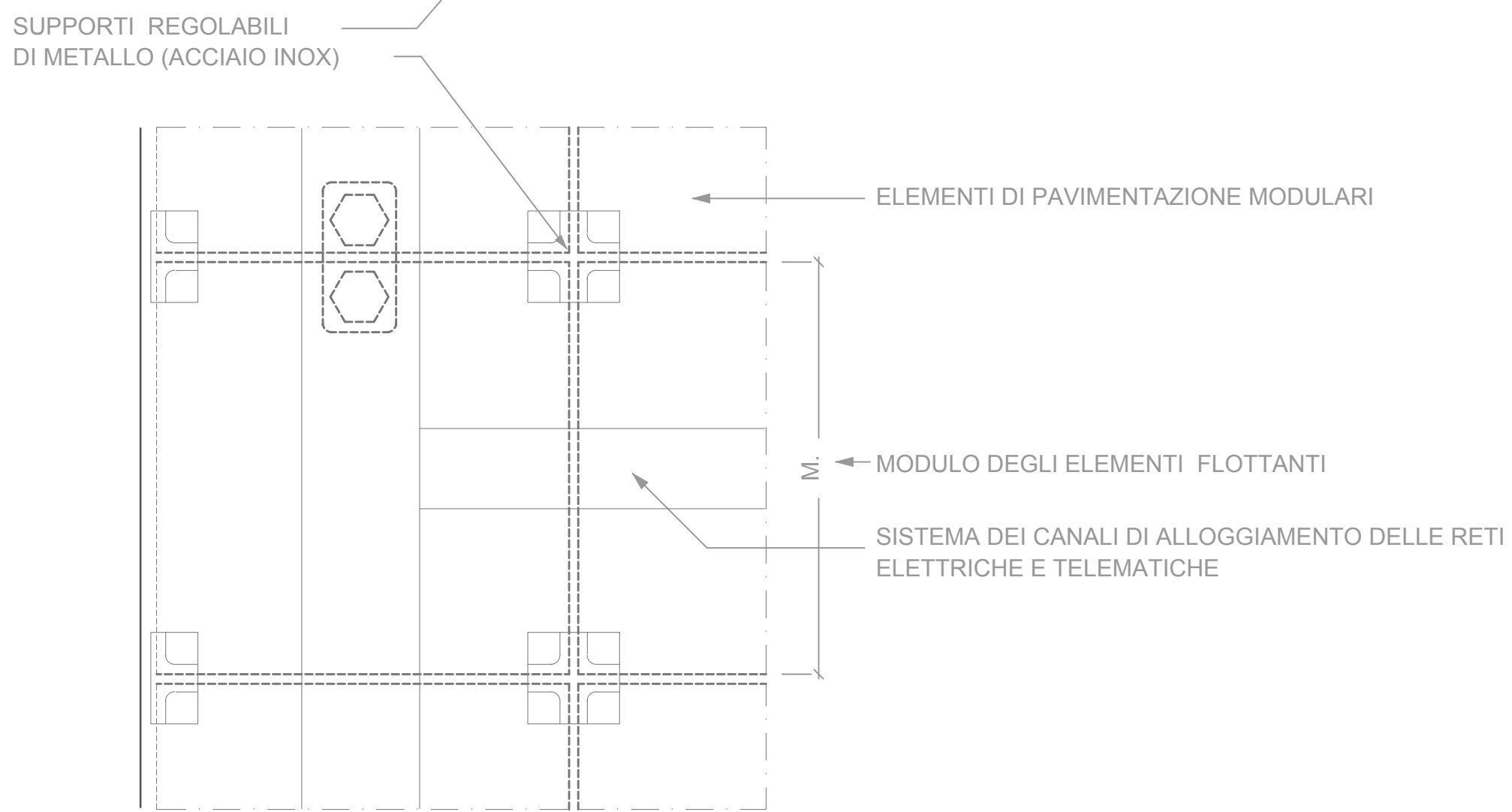
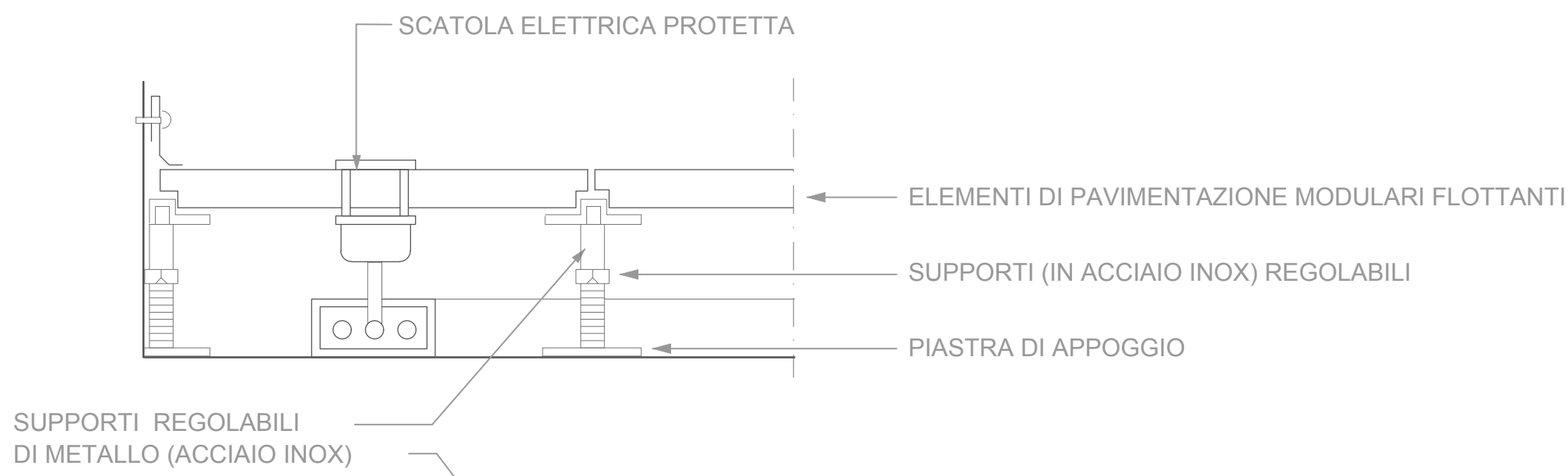
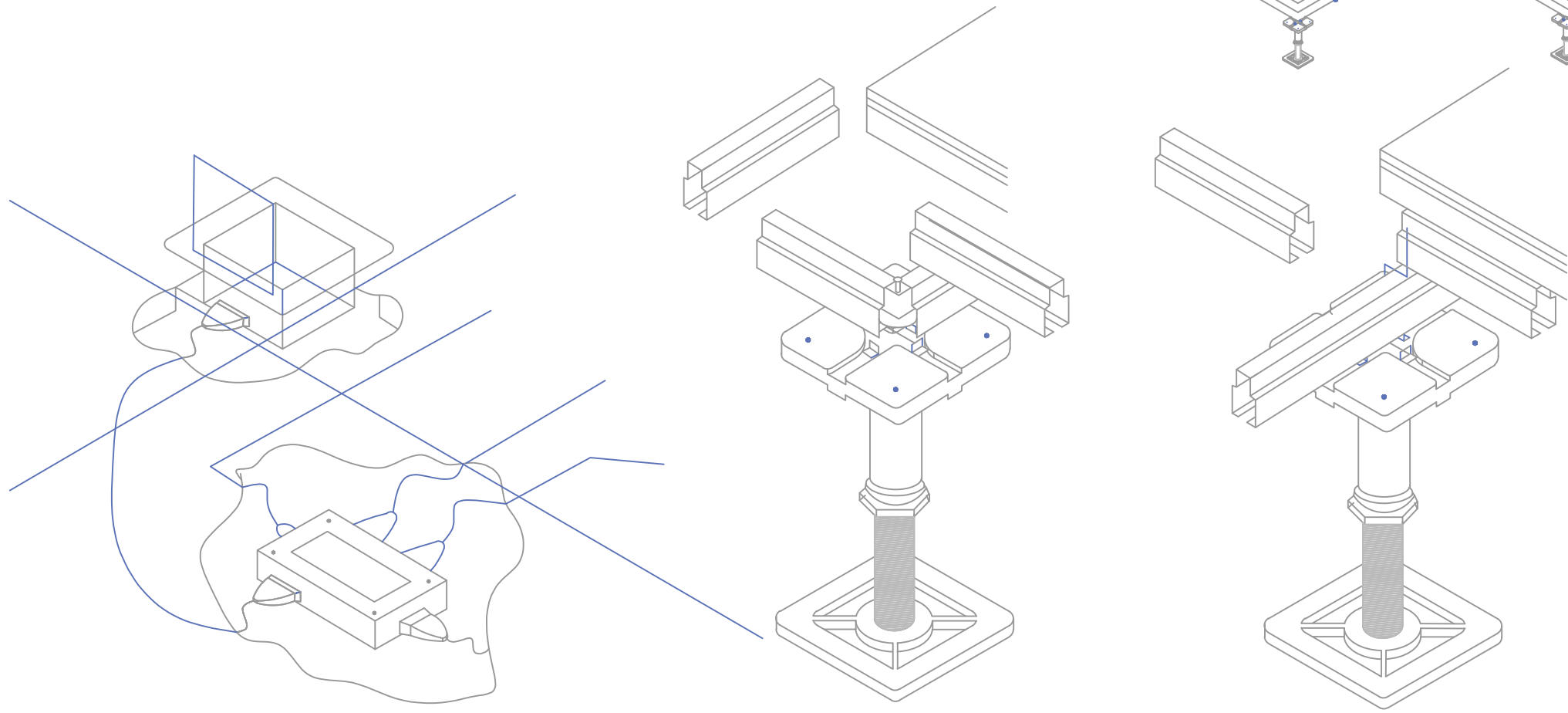
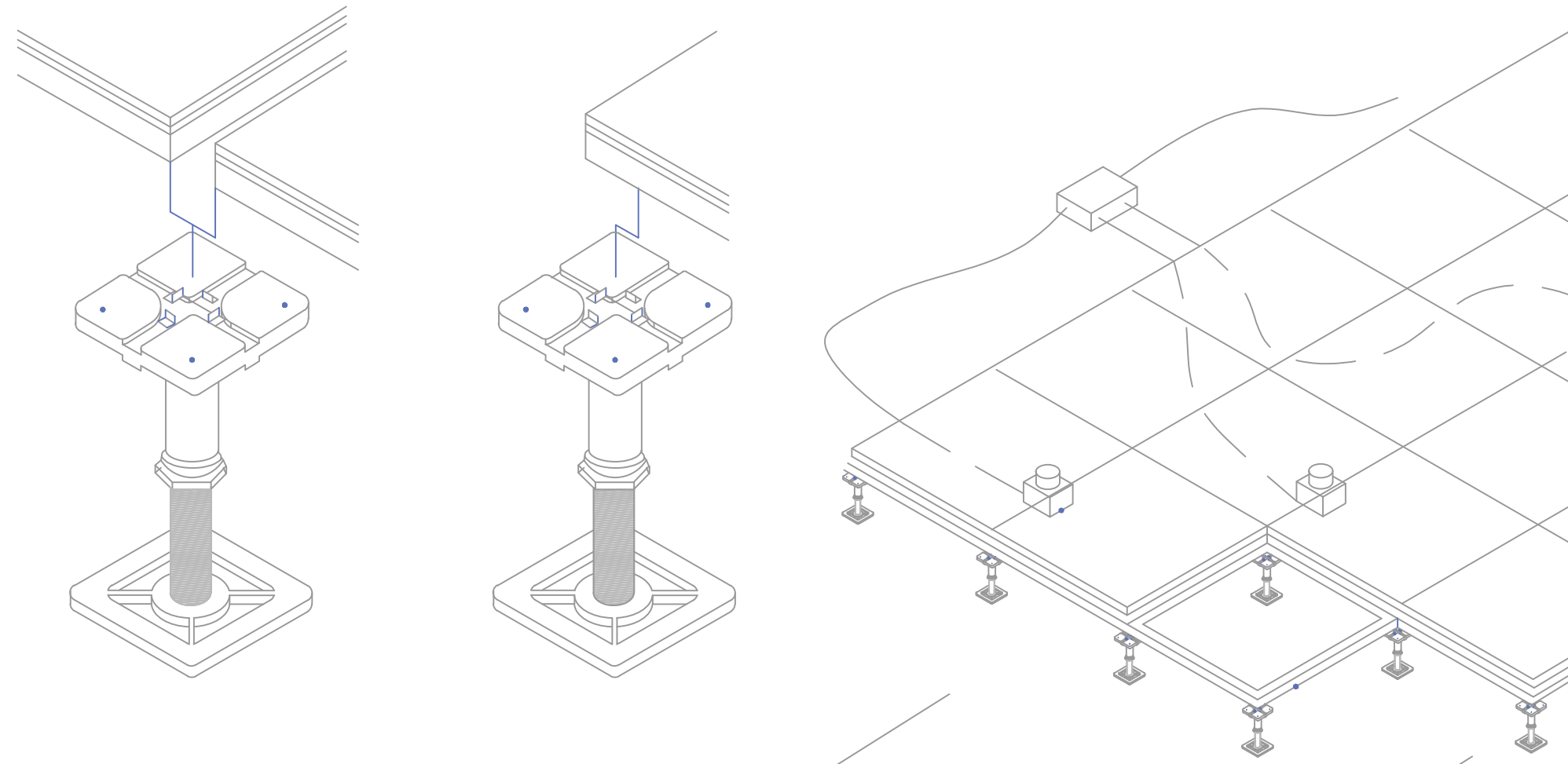
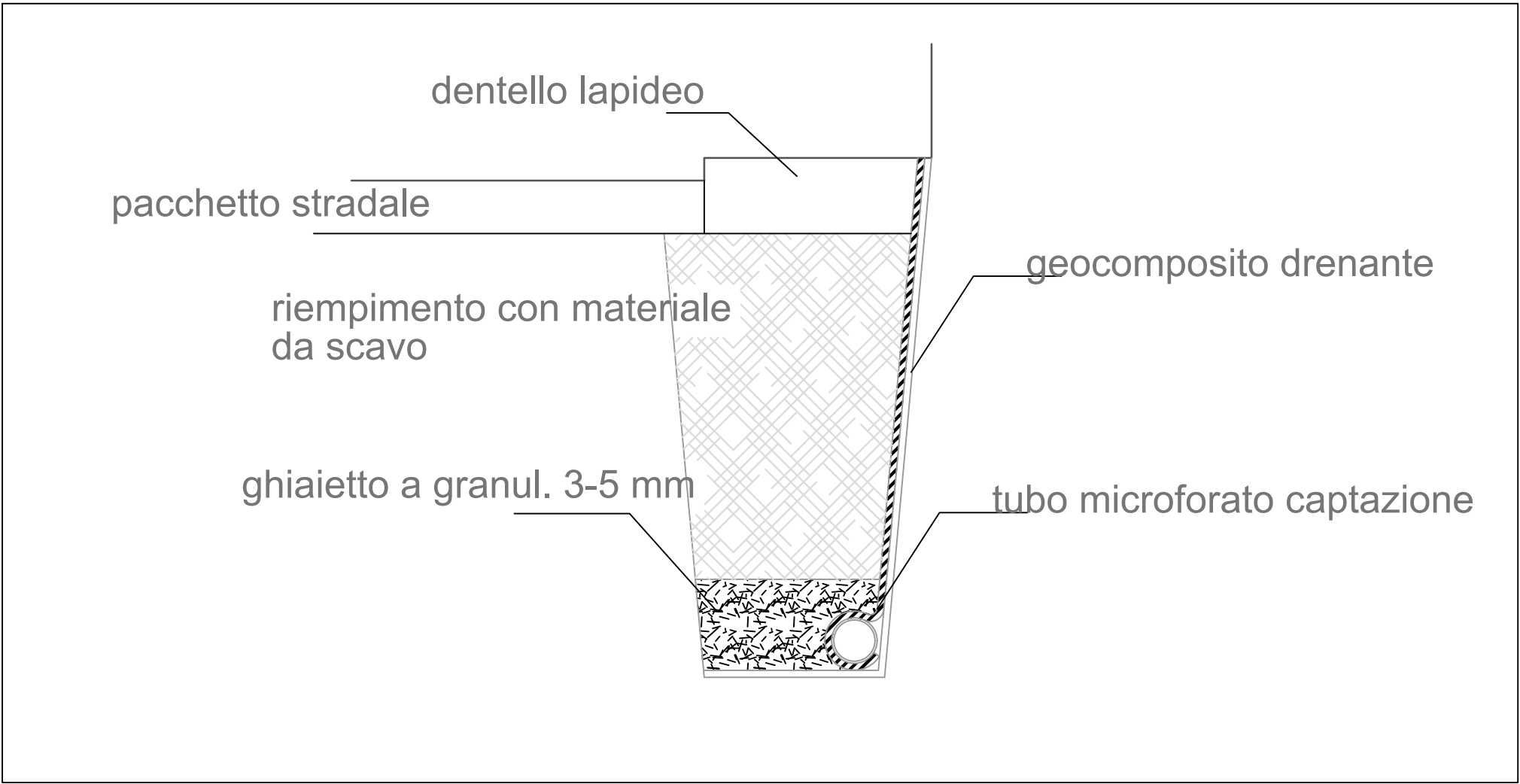
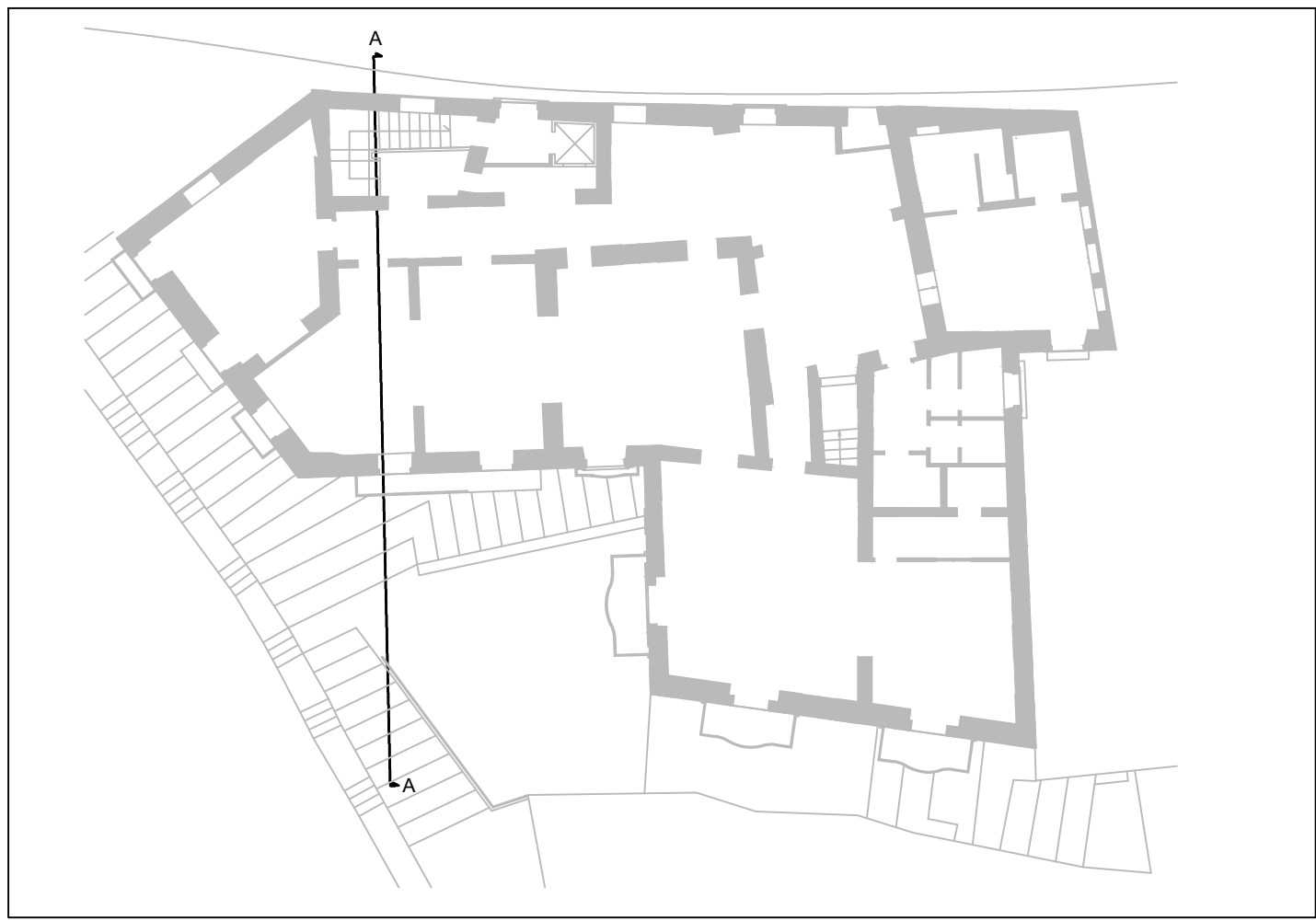
Responsabile Unico del Procedimento  
Geom. G. Selvaggio

PROGETTO ESECUTIVO

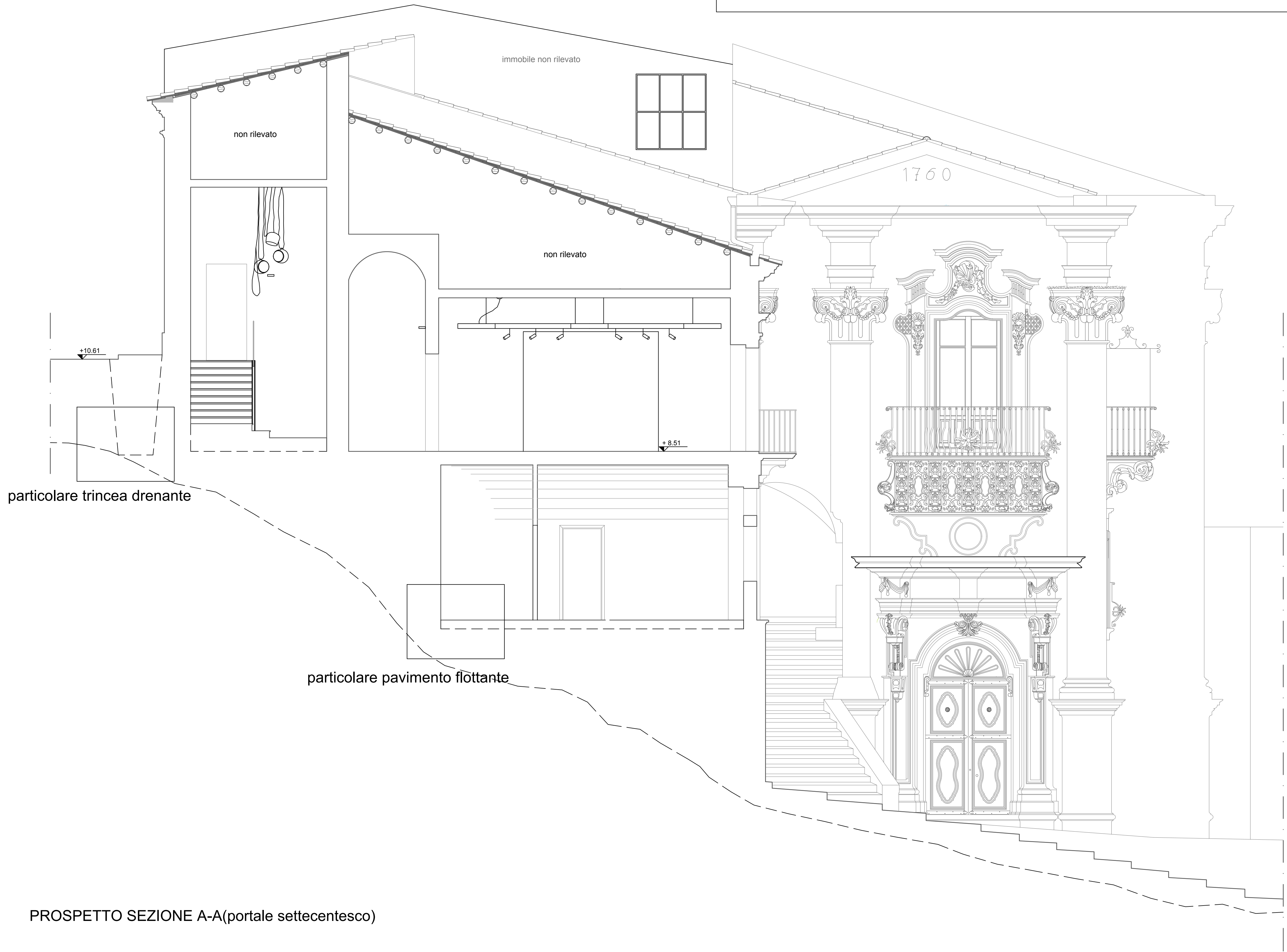
Prospetto-Sezione A-A

scala 1:50

22



B- SISTEMA PORTATO DA PIASTRE A INCASTRO



PROSPETTO SEZIONE A-A(portale settecentesco)